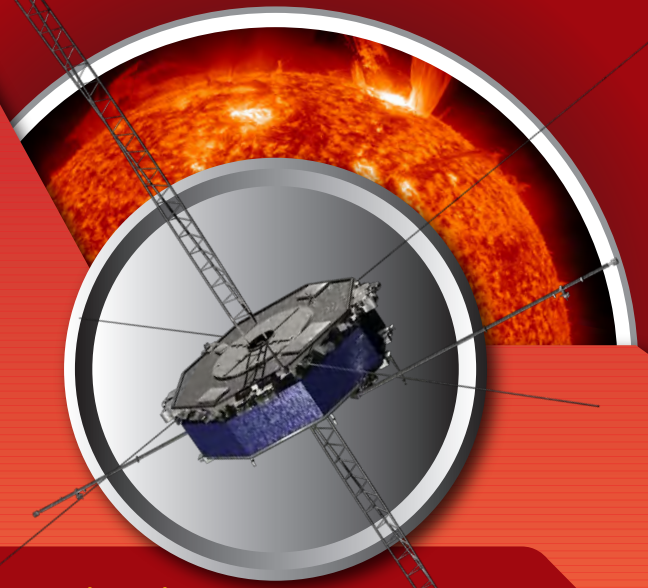


MAGNETIC RECONNECTION

Magnetic fields go in, energy comes out. Magnetic reconnection is a fundamental process of nature that happens all across our universe.

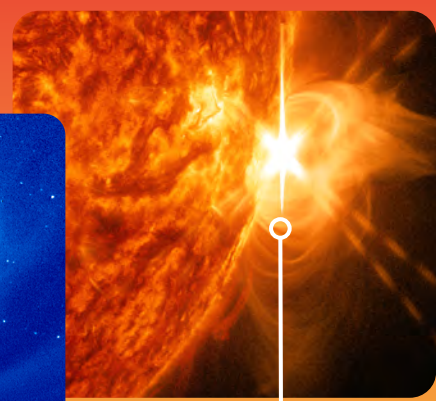
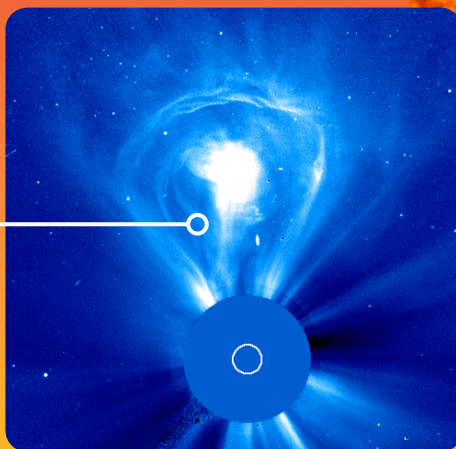


NASA's Magnetospheric Multiscale, or MMS, mission studies magnetic reconnection near Earth so we can understand it everywhere.

ON THE SUN

Magnetic reconnection sets off solar explosions, such as...

CORONAL MASS EJECTIONS

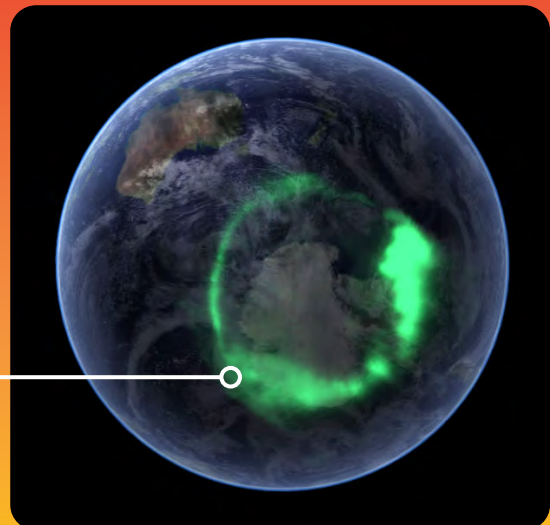


SOLAR FLARES

NEAR EARTH

It creates disturbances in near-Earth space, leading to...

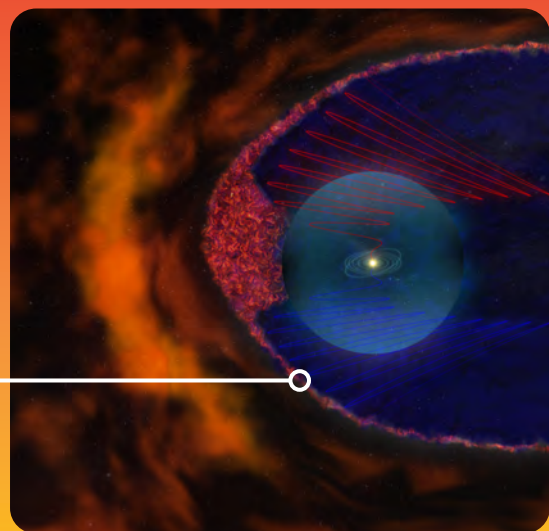
AURORAS



AT THE HELIOPAUSE

It sends interstellar matter across our solar system's magnetic boundary...

HELIOPAUSE



NEAR BLACK HOLES

It heats nearby gas to extraordinary temperatures...

BLACK HOLE

